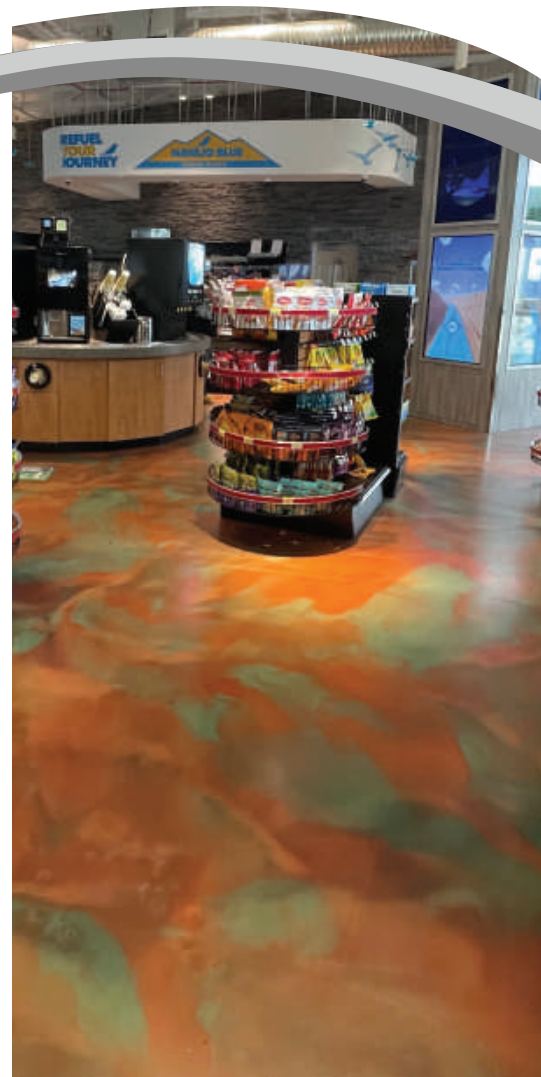
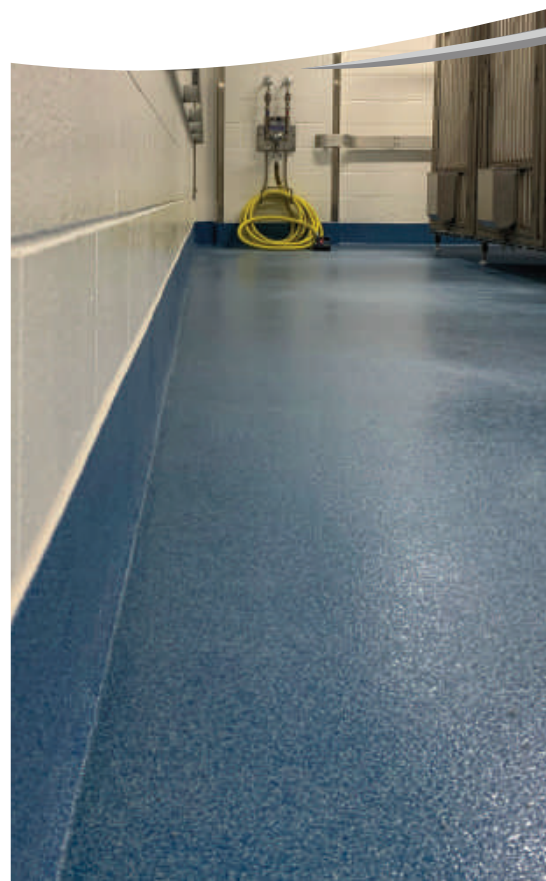


Systems Guide

KEY RESIN COMPANY



(888) 943-4532

KEYRESIN.COM



Index

SYSTEMS GUIDE



Key Resin Company is headquartered in Batavia, Ohio with a Western US office situated in Phoenix, Arizona. Together, both facilities manufacture products that provide durable, dependable solutions for a variety of floor and wall applications, including:

- Decorative
- Elastomeric
- Industrial
- Methyl Methacrylate (MMA)
- Moisture Vapor Control
- Chemical Resistance
- Impact & Wear Resistance
- Thermal Shock Resistance
- ESD/Conductivity
- Slip Resistance Color & Appearance

Our solutions deliver cost effective life-cycle profiles and outstanding overall performance.

Our FlowResin products are brought to market exclusively by Key Resin Company. Our knowledge and in-depth understanding of the construction market and resinous flooring industry combined with the complementary nature of products creates a vast benefit to our entire customer base. With warehousing locations across the U.S., Key Resin provides better resin flooring services, expertise and products than ever before.

We manufacture products with you in mind, they look great and perform even better.

Key Quartz	1
Key Chip/Flake	2
Key VersaFlake	3
Key Metallics	4
Keylux	5
Key Epoxy	6
Key Urecon	7
Moisture Vapor Control	8
Key MMA	9
Key ESD/Conductive	10
Flowfresh SL	11
Flowfresh SR	12
Flowfresh SRQ	13
Flowfresh MF	14
Flowfresh HF	15
Flowfresh RT	16
Flowfresh FC	17
Flowfresh FCUV	18
Flowseal PA	19
Flowcoat CR	20



Key Resin Quartz is a seamless and durable resinous flooring system consisting of colored quartz aggregate and clear resin. Quartz is ideal for impact and chemical resistant applications, non-skid texture, and ease of maintenance.

ADVANTAGES

- Decorative appearance
- High abrasion resistance
- Wear resistance
- Low maintenance
- Impact resistant
- Chemical resistance finishes available

TYPICAL USES

- Auditoriums/Classrooms
- Corridors
- Cafeterias/Kitchens
- Healthcare Facilities
- Shower/Locker areas
- Laboratories

STANDARD COLORS



Slate



Timberwolf



Sable



Incan Gold



Camel



Fog



Sage



Storm Cloud



Oceana



Quarry



Reef



Cheyenne

* Premium color, available upon request and additional surcharges apply.

Key Resin Company provides this color guide for preliminary color selection only. Please refer to a physical sample prior to making a final selection. Contact your local Key Resin Representative for assistance or contact the main office.



CHIPS/FLAKES

KEY RESIN COMPANY



Key Resin Chips/Flakes are a seamless and decorative vinyl flake floor coating system. Chips/Flakes provide excellent wear and abrasion resistance, ease of maintenance, and chemical resistance. Ideal for educational and public spaces. Full and partial broadcast applications available.

ADVANTAGES

- Excellent wear resistance
- Abrasion endurance
- Low maintenance
- Anti-skid for safety
- Low odor system
- Available in chemical resistant finishes

TYPICAL USES

- Residential garages
- Restrooms and locker rooms
- Laboratories
- Classrooms and cafeterias
- Lobbies and corridors
- Light manufacturing applications

Key Chips/Flakes

STANDARD COLORS



Wounded Warrior



Polar



Tundra



Highlands



Wilderness



Prairie



Oasis



Coastal



Alpine



Mediterranean



Forest



Desert

Key Resin Company provides this color guide for preliminary color selection only. Please refer to a physical sample prior to making a final selection. Contact your local Key Resin Representative for assistance or contact the main office.



VERSAFLAKE

KEY RESIN COMPANY



Key Resin VersaFlake is an innovative and versatile seamless floor system offering a distinct terrazzo-like appearance. Combining the traditional mosaic marble appearance of terrazzo with limitless customization of colored flakes, VersaFlake provides high end visual appeal with excellent wear, abrasion resistance and ease of maintenance.

ADVANTAGES

- Excellent wear resistance
- Abrasion endurance
- Low maintenance
- Anti-skid for safety
- Low odor system
- Available in chemical resistant finishes

TYPICAL USES

- Residential garages
- Restrooms and locker rooms
- Laboratories
- Classrooms and cafeterias
- Lobbies and corridors
- Light manufacturing applications

Key VersaFlake

STANDARD COLORS



Pecan Trail
VF 2001



River Bed
VF 2002



Rose Walk
VF 2003



Greige Coast
VF 2004



Biscotti Harvest
VF 2005



Stone Canyon
VF 2006



Russet Falls
VF 2007



Dawning Sky
VF 2008



Shaded Grove
VF 2009



Peppered Ash
VF 2010



Cornflower Field
VF 2011



Granite Mountain
VF 2012

Key Resin Company provides this color guide for preliminary color selection only. Please refer to a physical sample prior to making a final selection. Contact your local Key Resin Representative for assistance or contact the main office.



METALLICS

KEY RESIN COMPANY



Key Resin Metallics are highly decorative coating systems with a bright metallic finish. Metallics are installed using a variety of techniques resulting in unique, one-of-a-kind, artistic results. High gloss, satin and matte finish options are available.

ADVANTAGES

- Unique signature designs
- Excellent clarity and color
- Low odor during application and cure
- Multiple effects and colors possible
- Easy to maintain
- Available in 'fast cure' systems

TYPICAL USES

- Residential, interiors and garage
- Office spaces
- Hospitality and restaurant use
- Commercial areas
- Lobbies and corridors
- Light industrial applications

Key Metallics

STANDARD COLORS



Pearl KLM001



Dolphin KLM002



Manatee KLM003



Whale KLM004



Guava KLM007



Overcast KLM008



Sandal KLM012



Rum KLM015



Shipwreck KLM016



Coral KLM020



Carribean KLM040



Maui KLM042

Key Resin Company provides this color guide for preliminary color selection only. Please refer to a physical sample prior to making a final selection. Contact your local Key Resin Representative for assistance or contact the main office.



KEYLUXE

KEY RESIN COMPANY

Keyluxe is a decorative self-leveling floor system which utilizes 100% solids binder resins and custom designed aggregates to produce a resin-rich material that is easily applied. Formulated to create a beautiful floor quickly or refurbish an existing resinous floor with minimal time and labor cost. Keyluxe may be sealed to meet your facility's needs to enhance abrasion resistance, gloss retention, and slip resistant properties.

ADVANTAGES

- Unique Decorative appearance
- Low Maintenance
- Seamless and Sanitary
- Non-slip Finish with Topcoats
- 100% Solids provides low odor application
- Easy to install and maintain

TYPICAL USES

- Hospitals/Patient rooms
- Cafeterias
- Laboratories
- Light production areas
- Classrooms/Education
- Restrooms/Lobbys/Corridors
- Any area requiring seamless decorative floors

STANDARD COLORS



Classic 114-1



Cool 120-1



Natural 111-1



Cozy Brilliance 129-2



Subtle Brilliance 134-2



Traditional Brilliance 102-2



Simplicity Plus 126-3



Pure Plus 130-3



Fresh Plus 135-3



Diverse 404



Mystical 303



Limestone 202

Key Resin Company provides this color guide for preliminary color selection only. Please refer to a physical sample prior to making a final selection. Contact your local Key Resin Representative for assistance or contact the main office.





Key Epoxy is 100% solids epoxy applied as a coating, self-leveling slurry, broadcast or troweled mortar system. Applications range from 15 mils to 1/4". It provides excellent chemical and impact resistance. Recommended for a wide range of commercial and industrial applications with numerous solid color options.

ADVANTAGES

- Low or no VOC's
- Low maintenance
- High wear and abrasion resistance
- High chemical resistance
- Fast cure

TYPICAL USES

- Industrial and manufacturing
- Chemical processing
- Food and beverage processing
- Healthcare and pharmaceutical
- Commercial and hospitality
- Education, government, institutions and public spaces

Key Epoxy

STANDARD COLORS

					
100 Light Grey	135 Medium Grey	170 Dark Grey	185 Charcoal	210 White Sand	300 Taupe
					
435 Tan	440 Khaki	480 Beige	550 Green*	600 Slate Blue	650 Light Blue
					
750 Blue*	980 Red	850 Traffic Yellow*	950 Traffic Red*		

* Premium color, available upon request and additional surcharges apply.

Key Resin Company provides this color guide for preliminary color selection only. Please refer to a physical sample prior to making a final selection. Contact your local Key Resin Representative for assistance or contact the main office.



URECON

KEY RESIN COMPANY



Key Resin Urecon is a heavy-duty, urethane modified cementitious topping with high impact resistance, thermal shock resistance, quick installation and fast cure times. Urecon is ideal for manufacturing and food and beverage facilities.

ADVANTAGES

- Excellent chemical resistance
- Shock resistant
- Durable against wear & impact
- Great against moisture vapor transmission
- Low-odor application in occupied facilities
- Fast installation & cure time

TYPICAL USES

- Kitchens & cafeterias
- Restrooms & locker rooms
- Manufacturing & food processing
- Bottling & packaging
- Walk-in coolers & freezers
- Healthcare & laboratories

Key Urethane Cement

STANDARD COLORS



Cream



Tan



Khaki



Red



Black



Common Grey



Dark Grey



Green*



Blue*



Safety Yellow*



Flake Blend
Options Available



Quartz Blend
Options Available

* Premium color, available upon request and additional surcharges apply.

Key Resin Company provides this color guide for preliminary color selection only. Please refer to a physical sample prior to making a final selection. Contact your local Key Resin Representative for assistance or contact the main office.



MOISTURE MITIGATION

KEY RESIN COMPANY



Key Resin's MOISTURE VAPOR CONTROL SYSTEMS, also referred to as MOISTURE MITIGATION SYSTEMS, offer a solution to prevent moisture related failures with moisture sensitive flooring materials. These systems help control vapor transmission rates that contribute to loss of adhesion, warping, peeling, efflorescence deposits, or osmotic blistering - with osmotic blistering resistance being a performance feature of Key Epocon SL, Key Urecon and Flowfresh systems only, contact Key Resin Technical Service for details.

KEY EPOCON SL is a 1/8" moisture vapor control system utilizing KEY EPOCOAT 'reservoir' technology, a unique water based epoxy topping which allows the contractor to install polymer resin floor systems and other moisture sensitive floor coverings on new concrete (5 days old) without fear of moisture entrapment.

Advantages Include: Excellent adhesion to properly prepared concrete with a minimum cure of 5 days, Meets USGBC LEED criteria for low VOC, Unlimited moisture vapor tolerance (100% RH), Suitable for use over lightweight concrete, Compatible with most flooring systems, Low odor during application and cure, Eliminates risk of osmotic blistering.

FLOWFRESH SL is a 3/16" moisture vapor control system utilizing rapid cure urethane cement 'reservoir' formulation, which allows the contractor to install moisture sensitive polymer resin floor systems on new concrete (5 days old) without fear of moisture entrapment.

Advantages Include: Excellent adhesion to properly prepared concrete with a minimum cure of 5 days, Meets USGBC LEED criteria for low VOC, Unlimited moisture vapor tolerance (100% RH), Suitable for use over lightweight concrete, Rapid dry time, Low odor during application and cure, Eliminates risk of osmotic blistering.

FLOWFRESH FC-MVT is a 50-60 mil moisture vapor control system utilizing rapid cure urethane cement 'reservoir' formulation, which allows the contractor to install moisture sensitive polymer resin floor systems on new concrete (5 days old) without fear of moisture entrapment.

Advantages Include: Excellent adhesion to properly prepared concrete with a minimum cure of 5 days, Meets USGBC LEED criteria for low VOC Moisture tolerant up to 25 lbs MVER (CaCl test) and 100% RH (in situ probe test), Rapid dry time, Low odor during application and cure.

KEY #635-MVT PLUS+ is a two component, film-forming epoxy primer designed for use as a moisture vapor control treatment on concrete with excessive moisture vapor transmission or moisture content prior to applying finished flooring. ►





KEY METHYL METHACRYLATE (MMA) flooring systems are 100% fully reactive, rapidly curing MMA resin based systems. Installed at typical thickness of 1/8" to 1/4", these impervious, durable, and UV resistance flooring systems are long lasting and easy to maintain. KEY MMA systems can be installed with a flexible MMA membrane, making them ideal in situations where concrete movement is expected.

ADVANTAGES

- 100% reactive methyl methacrylate resin
- Extremely fast cure, less than 1 hour/coat
- Install in temperatures down to -20°F
- High impact and wear resistance
- Excellent resistance to acids and alkalis
- UV light resistant, ideal for exterior and interior applications

TYPICAL USES

- Restrooms, locker rooms
- Walk-in coolers, freezers
- Commercial kitchens
- Public facilities, stadiums
- Manufacturing, packaging
- Grocery stores, markets
- Health & research facilities

STANDARD COLORS



100 Light Grey



135 Medium Grey



170 Dark Grey



210 White Sand



300 Taupe



435 Tan



440 Khaki



480 Beige



550 Green*



600 Slate Blue



650 Light Blue



750 Blue*



980 Red



850 Traffic Yellow*



950 Traffic Red*



Flake Blend
Options Available



Quartz Blend
Options Available

* Premium color, available upon request and additional surcharges apply.

Key Resin Company provides this color guide for preliminary color selection only. Please refer to a physical sample prior to making a final selection. Contact your local Key Resin Representative for assistance or contact the main office.

ESD/CONDUCTIVE

KEY RESIN COMPANY



Key Electrostatic Dissipative & Conductive flooring systems use the latest in resinous technology to produce floors that meet a specific project's electrostatic control requirements. Covering the entire spectrum of electrical resistance and offering thicknesses ranging from 15 mil coatings to 1/4" non-sparking mortars are designed to protect the work environment against damage, injury, or financial loss associated with electrostatic discharge.

ADVANTAGES

- Abrasion, chemical & stain resistant
- High gloss and excellent cleanability
- 100% solids, low odor application
- Consistent electrical resistance readings:
 - Tested at 10 to 500 volts (dissipates a 5000 volt charge to zero in less than 0.1 sec @ 72°F and 12% relative humidity)

TYPICAL USES

- Hospitals, medical equipment and devices
- Pharmaceutical plants
- Data processing/computer rooms
- Military, aircraft hangers and aerospace
- Electronic manufacturing and assembly
- Hazardous industries (dust or explosion hazards)

Key ESD/Conductive

STANDARD COLORS



Grey ESD105



Dark Grey ESD170



Charcoal ESD185



Toffee ESD425



Tan ESD435



Khaki ESD440



Beige ESD480



Green* ESD550



Slate Blue ESD600



Light Blue ESD650



Red ESD980

* Premium color, available upon request and additional surcharges apply.

Key Resin Company provides this color guide for preliminary color selection only. Please refer to a physical sample prior to making a final selection. Contact your local Key Resin Representative for assistance or contact the main office.





Flowfresh SL (3/16")

A slurry-broadcast, cost effective and HACCP International certified antimicrobial treated cementitious urethane floor system.



Polygiene®:

Contains a silver ion antimicrobial additive to protect the surface.



Decorative:

Available in a wide-range of decorative patterns and finishes.



Lifecycle Cost Efficiencies:

Offers significant lifecycle cost savings compared to tile or acid brick.



Unaffected by MVT:

Allows moisture to move through the material at a safe rate.



Low Odor:

Low odor installation, non-toxic, and phthalate-free formulation.

Standard Colors:



The applied colors may differ from the examples shown.
For a full color chart and samples, contact your local Key Resin Company office.

COVERAGE RATES: (61 LB UNIT)

63 sq ft/unit at 1/8"
(yielding 3/16" finished floor)

COMPRESSIVE STRENGTH:

ASTM C 579 >7,250 psi

TENSILE STRENGTH:

ASTM C 307 1,740 psi

COEFFICIENT OF THERMAL EXPANSION:

ASTM C 531 2.7×10^{-5} in/in/°F

FLEXURAL STRENGTH:

ASTM C 580 2,900 psi

ABRASION RESISTANCE:

ASTM D 4060
CS 17 Wheel, 1000 cycles 0.05g loss

ADHESION:

ASTM D 4541 400 psi
(100% concrete failure)

COEFFICIENT OF FRICTION:

ASTM D 2047 Exceeds ADA
recommendations

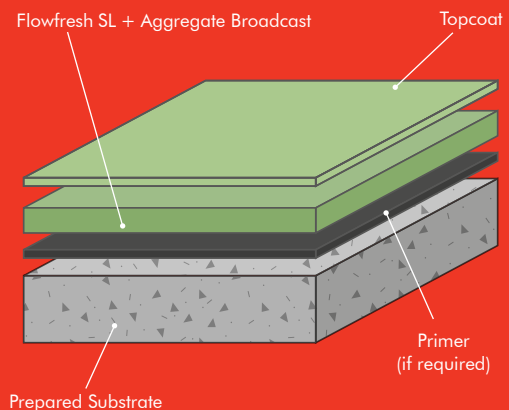
TEMPERATURE RESISTANCE:*

Continuous Exposure: 180°F

Intermittent Spills: 220°F

VOC: 9 g/l

SPEED OF CURE:	50°F	70°F	90°F
Light Traffic	12-14 hrs	6-8 hrs	3-5 hrs
Full Traffic	24-36 hrs	12-16 hrs	8-10 hrs
Full Chemical Cure	5-7 days	3-5 days	1-2 days



*Temperature resistance values shown apply when using Flowfresh FC as the topcoat.
**Light colored quartz may require an additional broadcast. Consult your sales representative.



Flowfresh SR (1/4" - 5/16")

Slurry-broadcast and HACCP International certified antimicrobial treated cementitious urethane floor systems.



Polygiene®:

Contains a silver ion antimicrobial additive to protect the surface.



Low Odor:

Low odor installation, non-toxic, and phthalate-free formulation.



Slip Resistant:

Positively textured profile to minimize slip risks in wet or damp areas.



Temperature Resistant:

Resistant to temperatures of up to 210°F and suitable for steam cleaning.



Unaffected by MVT:

Allows moisture to move through the material at a safe rate.

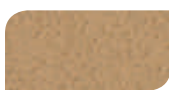
Standard Colors:



Cream



Tan



Khaki



Red



Green



Blue



Common Grey



Dark Grey



Black



Safety Yellow

The applied colors may differ from the examples shown.
General wear on Safety Yellow may be more visible.
For a full color chart and samples, contact your local Key Resin Company office.

Technical Profile



COVERAGE RATES: (47 LB UNIT)

24 sq ft/unit at 3/16" (yielding 1/4" finished floor)
18 sq ft/unit at 1/4" (yielding 5/16" finished floor)

COMPRESSIVE STRENGTH:

ASTM C 579 8,128 psi

TENSILE STRENGTH:

ASTM C 307 1,450 psi

COEFFICIENT OF THERMAL EXPANSION:

ASTM C 531 1.5×10^{-5} in/in/°F

FLEXURAL STRENGTH:

ASTM C 580 2,900 psi

ABRASION RESISTANCE:

ASTM D 4060
CS 17 Wheel, 1000 cycles 0.05g loss

ADHESION:

ASTM D 4541 400 psi
(100% concrete failure)

COEFFICIENT OF FRICTION:

ASTM D 2047 Exceeds ADA
recommendations

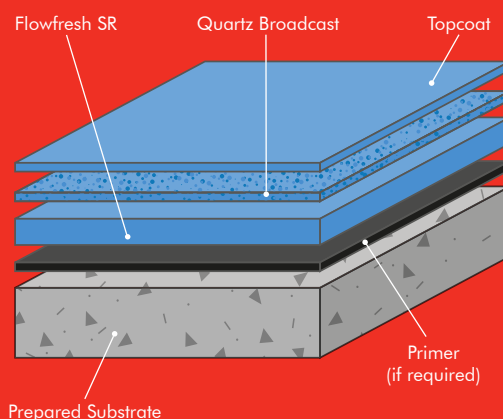
TEMPERATURE RESISTANCE:*

Continuous Exposure: 200°F

Intermittent Spills: 250°F

VOC: 7 g/l

SPEED OF CURE:	50°F	70°F	90°F
Light Traffic	12-14 hrs	6-8 hrs	3-5 hrs
Full Traffic	24-36 hrs	12-16 hrs	8-10 hrs
Full Chemical Cure	5-7 days	3-5 days	1-2 days



*Temperature resistance values shown apply when using Flowfresh FC as the topcoat.
v2.0 [06.30.22]



Flowfresh SRQ (1/4" - 5/16")

A decorative, slurry-broadcast and HACCP International certified antimicrobial treated cementitious urethane floor systems.



Polygiene®:

Contains a silver ion antimicrobial additive to protect the surface.



Low Odor:

Low odor installation, non-toxic, and phthalate-free formulation.



Slip Resistant:

Positively textured profile to minimize slip risks in wet or damp areas.



Temperature Resistant:

Resistant to temperatures of up to 210°F and suitable for steam cleaning.



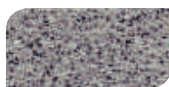
Unaffected by MVT:

Allows moisture to move through the material at a safe rate.

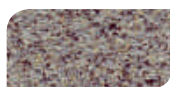
Standard Colors:



Spring Glen



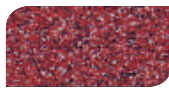
Grey Mist



Rococo



Blueberry Ice



Kitchen Red

The applied colors may differ from the examples shown.
For a full color chart and samples, contact your local Key Resin office.

Technical Profile



COVERAGE RATES: (47 LB UNIT)

24 sq ft/unit at 3/16" (yielding 1/4" finished floor)
18 sq ft/unit at 1/4" (yielding 5/16" finished floor)

COMPRESSIVE STRENGTH:

ASTM C 579 8,128 psi

TENSILE STRENGTH:

ASTM C 307 1,450 psi

COEFFICIENT OF THERMAL EXPANSION:

ASTM C 531 1.5×10^{-5} in/in/°F

FLEXURAL STRENGTH:

ASTM C 580 2,900 psi

ABRASION RESISTANCE:

ASTM D 4060
CS 17 Wheel, 1000 cycles 0.05g loss

ADHESION:

ASTM D 4541 400 psi
(100% concrete failure)

COEFFICIENT OF FRICTION:

ASTM D 2047 Exceeds ADA
recommendations

TEMPERATURE RESISTANCE:*

Continuous Exposure: 180°F

Intermittent Spills: 210°F

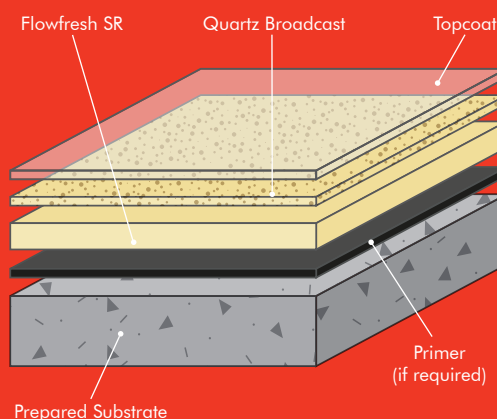
VOC: 7 g/l

SPEED OF CURE: 50°F 70°F 90°F

Light Traffic 12-14 hrs 6-8 hrs 3-5 hrs

Full Traffic 24-36 hrs 12-16 hrs 8-10 hrs

Full Chemical Cure 5-7 days 3-5 days 1-2 days



*Temperature resistance values shown apply when using Flowcoat CR as the topcoat.
**Light colored quartz may require an additional broadcast. Consult your sales representative.
v2.0 [06.30.22]



Flowfresh MF (3/16" - 1/4")

A self-leveling, HACCP International certified, smooth, matte antimicrobial treated cementitious urethane floor system.



Polygiene®:

Contains a silver ion antimicrobial additive to protect the surface.



Easily Cleaned:

Minimal surface joints ensure the floor is easy to clean and sanitize.



Chemical Resistant:

Protects against food by-products, fats, hot oils, blood, sugar and acids.



Unaffected by MVT:

Allows moisture to move through the material at a safe rate.



Low Odor:

Low odor installation, non-toxic, and phthalate-free formulation.

Standard Colors:



Cream



Tan



Khaki



Red



Green



Blue



Common Grey



Dark Grey



Black



Safety Yellow

The applied colors may differ from the examples shown.
General wear on Safety Yellow may be more visible.
For a full color chart and samples, contact your local Key Resin Company office.

Technical Profile



COVERAGE RATES: (40 LB UNIT)

22 sq ft/unit at 3/16"
17 sq ft/unit at 1/4"

COMPRESSIVE STRENGTH:

ASTM C 579 >7,250 psi

TENSILE STRENGTH:

ASTM C 307 1,740 psi

COEFFICIENT OF THERMAL EXPANSION:

ASTM C 531 2.2×10^{-5} in/in/°F

FLEXURAL STRENGTH:

ASTM C 580 2,900 psi

ABRASION RESISTANCE:

ASTM D 4060
CS 17 Wheel, 1000 cycles 0.07g loss

ADHESION:

ASTM D 4541 400 psi
(100% concrete failure)

COEFFICIENT OF FRICTION:

ASTM D 2047 Exceeds ADA
recommendations

TEMPERATURE RESISTANCE:

Continuous Exposure: 180°F

Intermittent Spills: 200°F

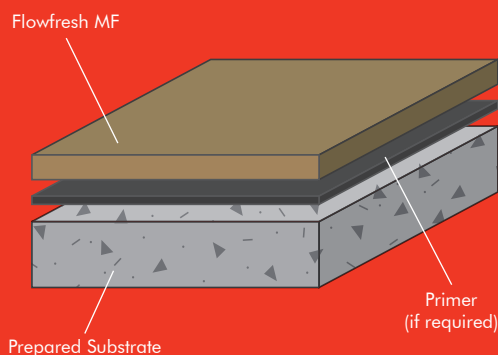
VOC: 7 g/l

SPEED OF CURE: 50°F 70°F 90°F

Light Traffic 12-14 hrs 6-8 hrs 3-5 hrs

Full Traffic 24-36 hrs 12-16 hrs 8-10 hrs

Full Chemical Cure 5-7 days 3-5 days 1-2 days





Flowfresh HF (1/4" - 3/8")

A trowel-applied, heavy-duty and HACCP International certified antimicrobial treated cementitious urethane mortar.



Polygiene®:

Contains a silver ion antimicrobial additive to protect the surface.



Chemical Resistant:

Protects against food by-products, fats, hot oils, blood, sugar and acids.



Slip Resistant:

Positively textured profile to minimize slip risks in wet or damp areas.



Temperature Resistant:

Resistant to temperatures of up to 250°F and suitable for steam cleaning.



Unaffected by MVT:

Allows moisture to move through the material at a safe rate.

Standard Colors:



Cream



Tan



Khaki



Red



Green



Blue



Common Grey



Dark Grey



Black



Safety Yellow

The applied colors may differ from the examples shown.
General wear on Safety Yellow may be more visible.
For a full color chart and samples, contact your local Key Resin Company office.

Technical Profile



COVERAGE RATES: (66 LB UNIT)

24 sq ft/unit at 1/4"
17 sq ft/unit at 3/8"

COMPRESSIVE STRENGTH:

ASTM C 579 8,000 psi

TENSILE STRENGTH:

ASTM C 307 1,450 psi

COEFFICIENT OF THERMAL EXPANSION:

ASTM C 531 1.1×10^{-5} in/in/°F

FLEXURAL STRENGTH:

ASTM C 580 2,900 psi

ABRASION RESISTANCE:

ASTM D 4060
CS 17 Wheel, 1000 cycles 0.05g loss

ADHESION:

ASTM D 4541 400 psi
(100% concrete failure)

COEFFICIENT OF FRICTION:

ASTM D 2047 Exceeds ADA
recommendations

TEMPERATURE RESISTANCE:

Continuous Exposure: 220°F

Intermittent Spills: 250°F

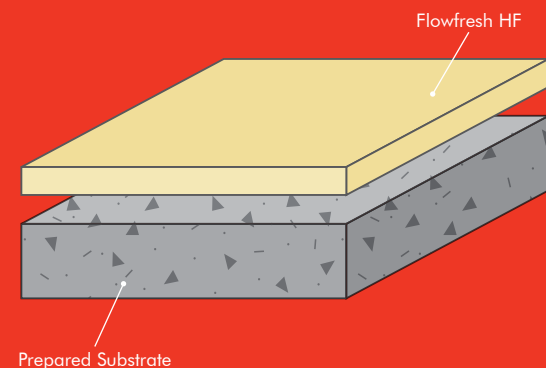
VOC: 5 g/l

SPEED OF CURE: 50°F 70°F 90°F

Light Traffic 12-14 hrs 6-8 hrs 3-5 hrs

Full Traffic 24-36 hrs 12-16 hrs 8-10 hrs

Full Chemical Cure 5-7 days 3-5 days 1-2 days





Flowfresh RT (1/4" - 3/8")

A rake & trowel-applied, heavy-duty and HACCP International certified antimicrobial treated cementitious urethane mortar.



Polygiene®:

Contains a silver ion antimicrobial additive to protect the surface.



Chemical Resistant:

Protects against food by-products, fats, hot oils, blood, sugar and acids.



Slip Resistant:

Positively textured profile to minimize slip risks in wet or damp areas.



Temperature Resistant:

Resistant to temperatures of up to 250°F and suitable for steam cleaning.



Unaffected by MVT:

Allows moisture to move through the material at a safe rate.

Standard Colors:



Cream



Tan



Khaki



Red



Green



Blue



Common Grey



Dark Grey



Black



Safety Yellow

The applied colors may differ from the examples shown.
General wear on Safety Yellow may be more visible.
For a full color chart and samples, contact your local Key Resin Company office.

Technical Profile



COVERAGE RATES: (55 LB UNIT)

21 sq ft/unit at 1/4"
14 sq ft/unit at 3/8"

COMPRESSIVE STRENGTH:

ASTM C 579 8,000 psi

TENSILE STRENGTH:

ASTM C 307 1,450 psi

COEFFICIENT OF THERMAL EXPANSION:

ASTM C 531 1.1×10^{-5} in/in/°F

FLEXURAL STRENGTH:

ASTM C 580 2,900 psi

ABRASION RESISTANCE:

ASTM D 4060
CS 17 Wheel, 1000 cycles 0.07g loss

ADHESION:

ASTM D 4541 400 psi
(100% concrete failure)

COEFFICIENT OF FRICTION:

ASTM D 2047 Exceeds ADA
recommendations

TEMPERATURE RESISTANCE:

Continuous Exposure: 220°F

Intermittent Spills: 250°F

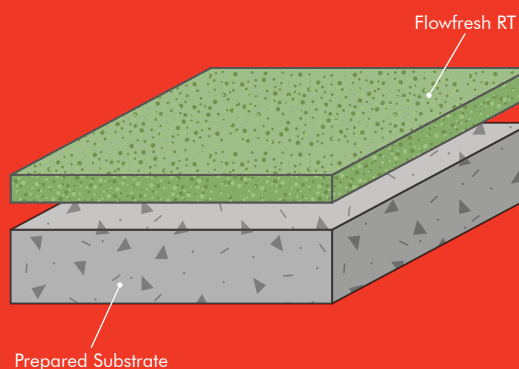
VOC: 6 g/l

SPEED OF CURE: 50°F 70°F 90°F

Light Traffic 12-14 hrs 6-8 hrs 3-5 hrs

Full Traffic 24-36 hrs 12-16 hrs 8-10 hrs

Full Chemical Cure 5-7 days 3-5 days 1-2 days





Flowfresh FC (3/16" - 3/8")

A pigmented, high performance, antimicrobial treated cementitious urethane floor sealer with a matte appearance. Applied as a lock coat sealer to any Flowfresh cement overlays that can be fully broadcast with aggregate.



Polygiene®:

Contains a silver ion antimicrobial additive to protect the surface.



Decorative:

Available in a wide-range of decorative patterns and finishes.



Lifecycle Cost Efficiencies:

Offers significant lifecycle cost savings compared to tile or acid brick.



Unaffected by MVT:

Allows moisture to move through the material at a safe rate.



Low Odor:

Low odor installation, non-toxic, and phthalate-free formulation.

Standard Colors:



Cream



Tan



Khaki



Red



Green



Blue



Common Grey



Dark Grey



Black



Safety Yellow

The applied colors may differ from the examples shown.
For a full color chart and samples, contact your local Key Resin office.

Technical Profile



COVERAGE RATES: (17 LB UNIT)

80-120 sq ft/unit as primer or sealer

COMPRESSIVE STRENGTH:

ASTM C 579 7,000 psi

TENSILE STRENGTH:

ASTM C 307 1,500 psi

COEFFICIENT OF THERMAL EXPANSION:

ASTM C 531 1.1×10^{-5} in/in/°F

FLEXURAL STRENGTH:

ASTM C 580 1,200 psi

ABRASION RESISTANCE:

ASTM D 4060
CS 17 Wheel, 1000 cycles 0.05g loss

TEMPERATURE RESISTANCE:*

Continuous Exposure: 220°F

Intermittent Spills: 250°F

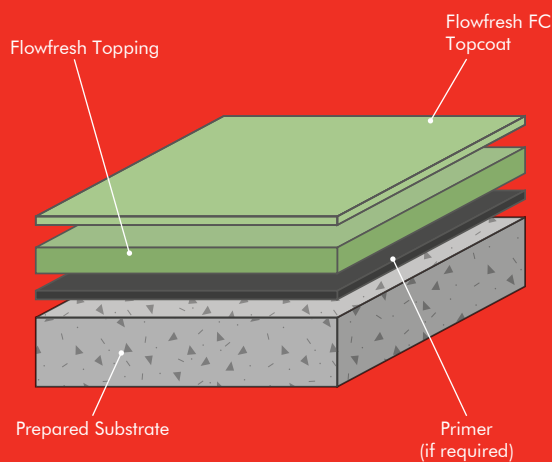
VOC: <10 g/l

SPEED OF CURE: 70°F

Light Traffic 8 hrs

Full Traffic 24 hrs

Full Chemical Cure 5-7 days



*General wear on Safety Yellow may be more visible.



Flowfresh FCUV (3/16" - 3/8")

A pigmented, high performance, UV stable, semi-gloss, antimicrobial treated cementitious urethane floor sealer. Applied as a lock coat sealer to any Flowfresh cement overlays that can be fully broadcast with aggregate.



Polygiene®:

Contains a silver ion antimicrobial additive to protect the surface.



UV Resistant:

Exhibits excellent UV color stability over time and will not become brittle with age.



Lifecycle Cost Efficiencies:

Offers significant lifecycle cost savings compared to tile or acid brick.



Unaffected by MVT:

Allows moisture to move through the material at a safe rate.



Low Odor:

Low odor installation, non-toxic, and phthalate-free formulation.

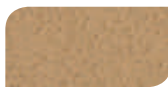
Standard Colors:



Cream



Tan



Khaki



Red



Green



Blue



Common Grey



Dark Grey



Black



Safety Yellow

The applied colors may differ from the examples shown.
For a full color chart and samples, contact your local Key Resin office.

Technical Profile



COVERAGE RATES: (25 LB UNIT)

125 sq ft/unit as primer or sealer

ELONGATION AT BREAK:

ASTM D 638 20%

TENSILE STRENGTH:

ASTM C 308 1,500 psi

COEFFICIENT OF THERMAL EXPANSION:

ASTM C 531 1.5×10^{-5} in/in/°F

FLEXURAL STRENGTH:

ASTM C 580 2,400 psi

ABRASION RESISTANCE:

ASTM D 4060
CS 17 Wheel, 1000 cycles 0.05g loss

TEMPERATURE RESISTANCE:*

Continuous Exposure: 200°F

Intermittent Spills: 250°F

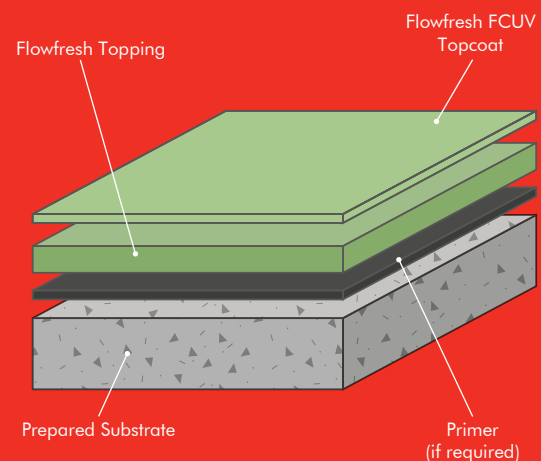
VOC: 5 g/l

SPEED OF CURE: 70°F

Light Traffic 8 hrs

Full Traffic 24 hrs

Full Chemical Cure 5-7 days



*General wear on Safety Yellow may be more visible.



Flowseal PA (3/16" - 3/8")

A fast-curing UV stable sealer or receiving coat for flakes and quartz broadcast systems.



UV Resistant:

100% UV stable formulation available to prevent the floor from yellowing.



Low Odor:

Low odor installation, non-toxic, and phthalate-free formulation.



Chemical Resistant:

Protects against a variety of aggressive acids, solvents caustics and chemicals.



Temperature Resistant:

Resistant to temperatures of up to 300°F and suitable for steam cleaning.



Fast Cure:

Accelerated cure time, providing an operational surface in just 12 hours.

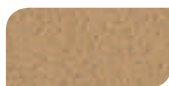
Standard Colors:



Cream



Tan



Khaki



Red



Green



Blue



Common Grey



Dark Grey



Black



Safety Yellow

The applied colors may differ from the examples shown.
For a full color chart and samples, contact your local Key Resin Company office.

Technical Profile



COVERAGE RATES: (27 LB UNIT)

100-115 sq ft/unit on broadcast systems
200-250 sq ft/unit on non-textured

COMPRESSIVE STRENGTH:

ASTM C 579 7,000 psi

TENSILE STRENGTH:

ASTM D308 1,500 psi

COEFFICIENT OF THERMAL EXPANSION:

ASTM C 531 1.5×10^{-5} in/in/°F

FLEXURAL STRENGTH:

ASTM C 580 1,200 psi

ABRASION RESISTANCE:

ASTM D 4060
CS 17 Wheel, 1000 cycles 0.05 mg loss

ELONGATION AT BREAK:

ASTM D 638 20%

TEMPERATURE RESISTANCE:*

Continuous Exposure: 200°F

Intermittent Spills: 250°F

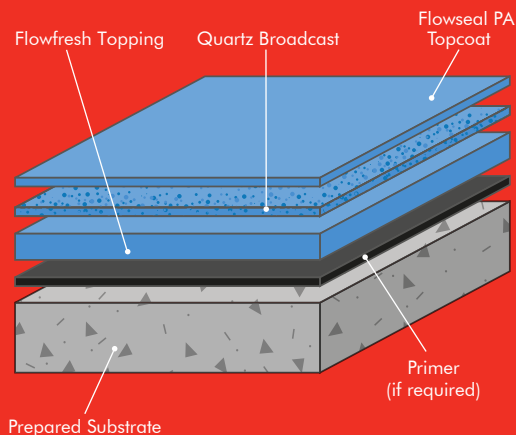
VOC: <10 g/l

SPEED OF CURE: 70°F

Light Traffic 8 hrs

Full Traffic 24 hrs

Full Chemical Cure 5-7 days



v2.0 [08.15.22]



Flowcoat CR (28 - 30 mils)

A 100% solids, high performance and highly chemical resistant epoxy floor coating system.



Chemical Resistant:

Protects against a range of acids, alkalis, solvents, alcohol, sanitizers and fuel.



Slip Resistant:

Adjustable, positively textured profile to minimize slip risks in wet or damp areas.



Wear Resistant:

Excellent abrasion, impact and wear resistance in high traffic areas.



Low Odor:

Low odor installation, non-toxic, and solvent-free formulation.



Seamless & Easily Cleaned:

Seamless installation ensures dirt and dust are swiftly and easily cleaned away.

Standard Colors:



100 Light Grey



135 Medium Grey



170 Dark Grey



185 Charcoal



210 White Sand



300 Taupe



435 Tan



440 Khaki



480 Beige



550 Green



600 Slate Blue



650 Light Blue



750 Blue



980 Red



850 Traffic Yellow



950 Traffic Red

The applied colors may differ from the examples shown.
For a full color chart and samples, contact your local Key Resin Company office.

Technical Profile

COMPRESSIVE STRENGTH:

ASTM C 579	>10,500 psi
------------	-------------

TENSILE STRENGTH:

ASTM D 638	>2,100 psi
------------	------------

FLEXURAL STRENGTH:

ASTM C 580	>8,700 psi
------------	------------

SLIP RESISTANCE:

PTV BS 7976-2 (Using TRRL Rubber Slider)	Dry: 60 Wet: Dependent on specification
---	--

ABRASION RESISTANCE:

ASTM D 4060 CS 17 Wheel, 1000 cycles	0.06g loss
---	------------

SURFACE HARDNESS:

Koenig Hardness Test	>180 secs
----------------------	-----------

BOND STRENGTH:

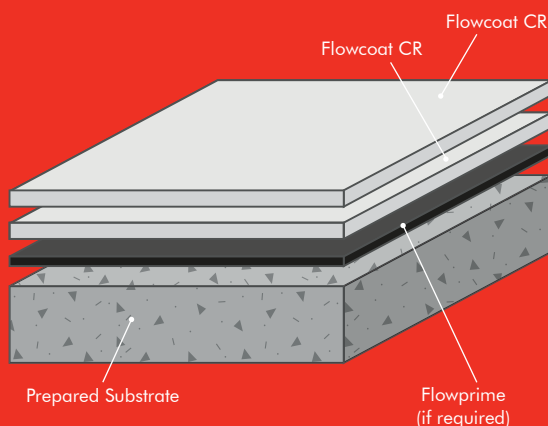
Greater than cohesive strength of 3,000 psi concrete,
> 220 psi

TEMPERATURE RESISTANCE:

Continuous Exposure:	Up to 160°F
----------------------	-------------

VOC:	20 g/l
------	--------

SPEED OF CURE:	50°F	70°F	90°F
Light Traffic	36 hrs	16 hrs	10 hrs
Full Traffic	96 hrs	48 hrs	30 hrs
Full Chemical Cure	14 days	7 days	3 days



v2.0 [08.15.22]

flowresinamericas.com